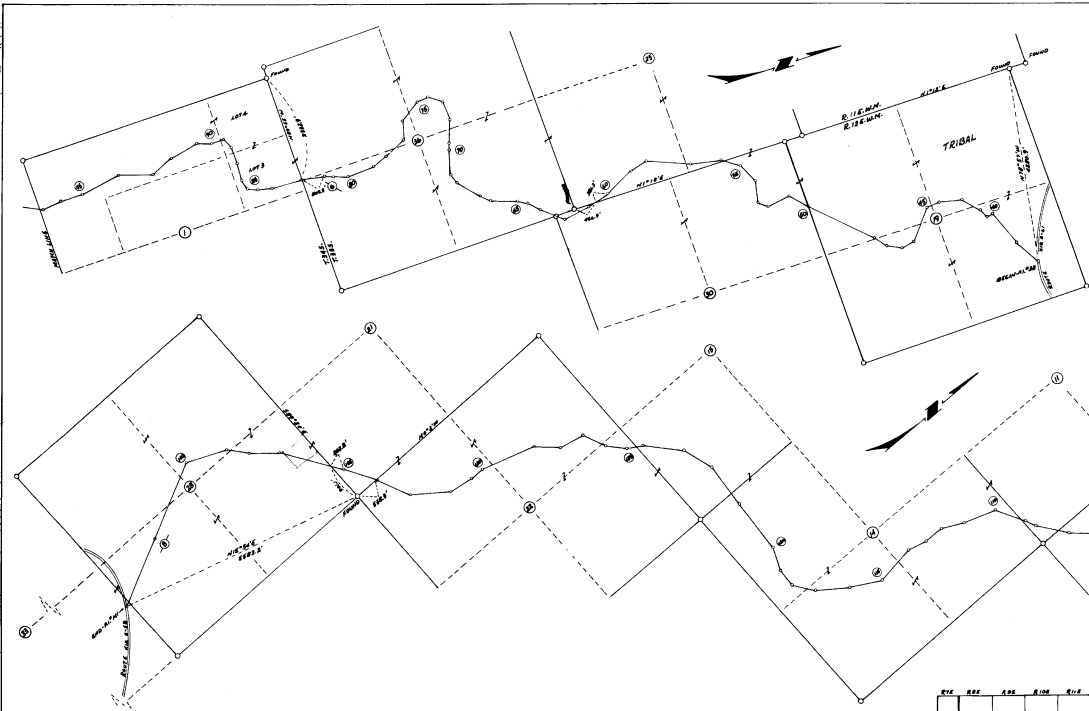


KIP 9-T



Station	Bearing	Distance	Station	Bearing	Distance
PI No. 18	S 387° 50' W	625.5	PI No. 71	S 707° 30' W	225.2
PI No. 19	S 707° 30' W	625.5	PI No. 72	S 377° 31' W	225.6
PI No. 20	S 107° 58' E	184.8	PI No. 73	S 377° 31' W	225.6
PI No. 21	S 687° 55' E	102.1	PI No. 74	S 137° 18' E	219.1
PI No. 22	S 137° 18' E	470.2	PI No. 75	S 137° 18' E	219.1
PI No. 23	S 137° 18' E	470.2	PI No. 76	S 137° 18' E	219.1
PI No. 24	S 137° 18' E	470.2	PI No. 77	S 137° 18' E	219.1
PI No. 25	S 137° 18' E	470.2	PI No. 78	S 137° 18' E	219.1
PI No. 26	S 137° 18' E	470.2	PI No. 79	S 137° 18' E	219.1
PI No. 27	S 137° 18' E	470.2	PI No. 80	S 137° 18' E	219.1
PI No. 28	S 137° 18' E	470.2	PI No. 81	S 137° 18' E	219.1
PI No. 29	S 137° 18' E	470.2	PI No. 82	S 137° 18' E	219.1
PI No. 30	S 137° 18' E	470.2	PI No. 83	S 137° 18' E	219.1
PI No. 31	S 137° 18' E	470.2	PI No. 84	S 137° 18' E	219.1
PI No. 32	S 137° 18' E	470.2	PI No. 85	S 137° 18' E	219.1
PI No. 33	S 137° 18' E	470.2	PI No. 86	S 137° 18' E	219.1
PI No. 34	S 137° 18' E	470.2	PI No. 87	S 137° 18' E	219.1
PI No. 35	S 137° 18' E	470.2	PI No. 88	S 137° 18' E	219.1
PI No. 36	S 137° 18' E	470.2	PI No. 89	S 137° 18' E	219.1
PI No. 37	S 137° 18' E	470.2	PI No. 90	S 137° 18' E	219.1
PI No. 38	S 137° 18' E	470.2	PI No. 91	S 137° 18' E	219.1
PI No. 39	S 137° 18' E	470.2	PI No. 92	S 137° 18' E	219.1
PI No. 40	S 137° 18' E	470.2	PI No. 93	S 137° 18' E	219.1
PI No. 41	S 137° 18' E	470.2	PI No. 94	S 137° 18' E	219.1
PI No. 42	S 137° 18' E	470.2	PI No. 95	S 137° 18' E	219.1
PI No. 43	S 137° 18' E	470.2	PI No. 96	S 137° 18' E	219.1
PI No. 44	S 137° 18' E	470.2	PI No. 97	S 137° 18' E	219.1
PI No. 45	S 137° 18' E	470.2	PI No. 98	S 137° 18' E	219.1
PI No. 46	S 137° 18' E	470.2	PI No. 99	S 137° 18' E	219.1
PI No. 47	S 137° 18' E	470.2	PI No. 100	S 137° 18' E	219.1
PI No. 48	S 137° 18' E	470.2	PI No. 101	S 137° 18' E	219.1
PI No. 49	S 137° 18' E	470.2	PI No. 102	S 137° 18' E	219.1
PI No. 50	S 137° 18' E	470.2	PI No. 103	S 137° 18' E	219.1

ENGINEER'S AFFIDAVIT

STATE OF OREGON
 COUNTY OF KLAMATH

I, James C. Anderson, being first duly sworn, declare that I am the Highway Engineer for the Klamath Indian Agency, that the survey of the road described on this map was made by me or under his direction; that the said survey is 11.175 miles in length and is accurately represented on this map.

Date: May 12 1952

Subscribed and sworn to before me, this 12 day of May, 1952.

Robert K. Bennett Notary Public, Residing in State of Oregon.

My Commission Expires January 6 1953

CERTIFICATION OF KLAMATH COUNTY

I, James C. Anderson, hereby certify that I am the Judge of the County Court of Klamath County, Oregon; that I am satisfied as to the accuracy of the survey of the road and of the accuracy of this map as which the survey is represented; that Klamath County accepts the right of way for the road represented on this map pursuant to agreement with the Bureau of Indian Affairs dated June 26, 1955.

Date: May 12 1952

James C. Anderson
 Judge, County Court

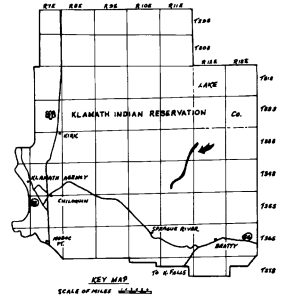
Attested: James C. Anderson
 Clerk, County Court

CERTIFICATE

This map, composed of one (1) sheet, is approved pursuant to the provisions of the Act of Congress dated February 3, 1906 (34 Stat. 18; 25 U.S.C. 333-338); Public Law 307, dated August 11, 1955, (68 Stat. 718) and as amended by the Act of August 21, 1956 (P.L. 55-751); and Departmental Regulations (25 C.F.R. 161, 170-178), and subject to any prior valid existing rights or adverse claims, and transferred to Klamath County, Oregon, pursuant to stipulations of the agreement dated June 26, 1955 between the United States as represented by the Bureau of Indian Affairs and Klamath County as represented by the Judge, Klamath County Court.

Date Approved: May 12 1952

James C. Anderson
 Acting Officer in Charge
 Klamath Agency, Oregon



LEGEND

- ① POINT OF INTERSECTION
- ② POINT ON TURNBACK
- ③ SECTION NUMBER

NOTE:

ALL SECTION CORNERS COMPUTED FROM G.L.O. SURVEY NOTES UNLESS NOTED OTHERWISE.

ALL BEARINGS ARE TRUE ORIGINATING VIEW TOWARD BEARING OF NORTH IS 8-41 SURVEY.

LENGTH OF ROAD - 11.175 MILES
 WIDTH OF ROAD - 60.0 FEET

U.S. DEPT. OF THE INTERIOR
 BUREAU OF INDIAN AFFAIRS
 ROAD RIGHT-OF-WAY TRANSFER PLAT
 TELEPHONE LINE ELEVEN ROAD
 KLAMATH INDIAN RESERVATION
 KLAMATH COUNTY, OREG.
 SCALE ("=1000")
 88-27-88 1000 88-27-88-27-88